

# Map MENTOR



English

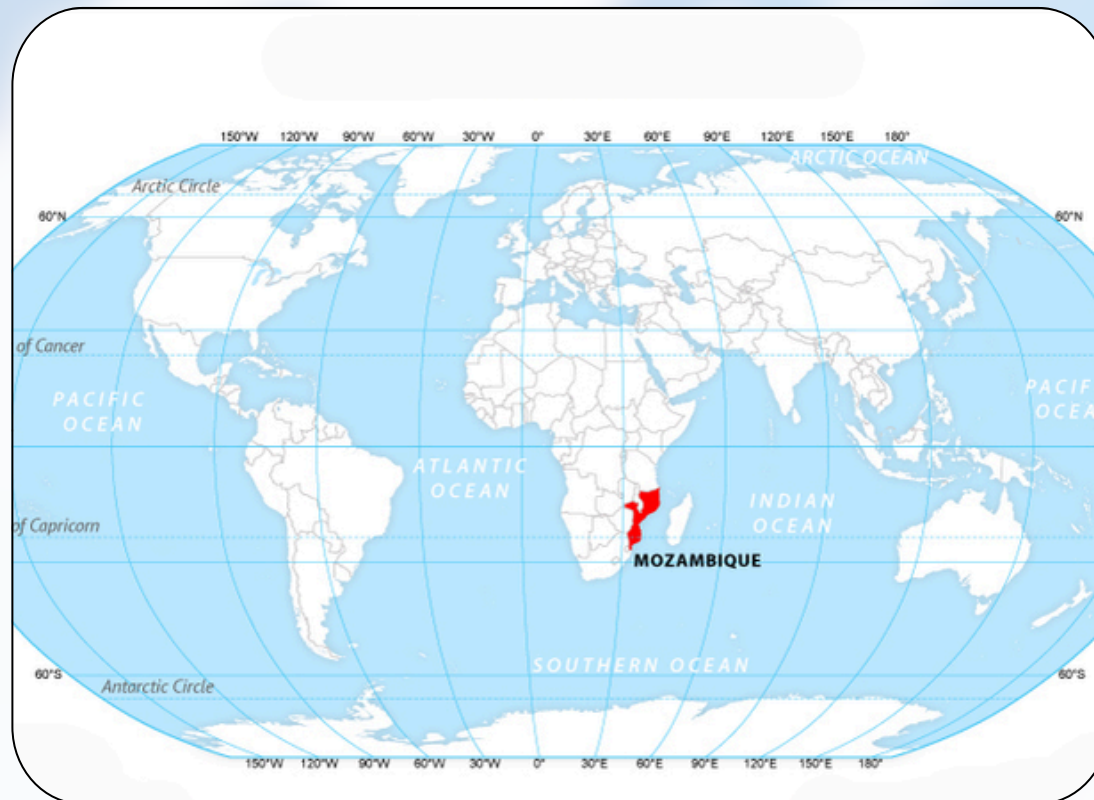
Weekly Compilation  
[22nd-27th September, 2025]



# Mozambique

## Why in News?

- Indian Navy's 1TS Arrives in Mozambique to **Celebrate 50 Years of Diplomatic Relations.**



## Crucial Facts

- Location:** Southeast Africa
- Capital and largest city:** Maputo
- Government:** Unitary dominant-party semi-presidential republic under an authoritarian government
- Borders:** Indian Ocean (E), Tanzania (N), Malawi and Zambia (NW), Zimbabwe (W), Eswatini and South Africa (S&SW).
- Separated from:** Comoros, Mayotte, and Madagascar by the Mozambique Channel.

## Key Highlights



- It faces a **low-intensity Islamist insurgency** mainly in its northern, Muslim-majority provinces.
- It gained independence in 1975, becoming the **People's Republic of Mozambique** under **socialist leadership**.
- **Swahili Port** towns developed from the 7th century, **shaping local culture** and **trade dialects**.

# Turkana Basin

## Why in News?

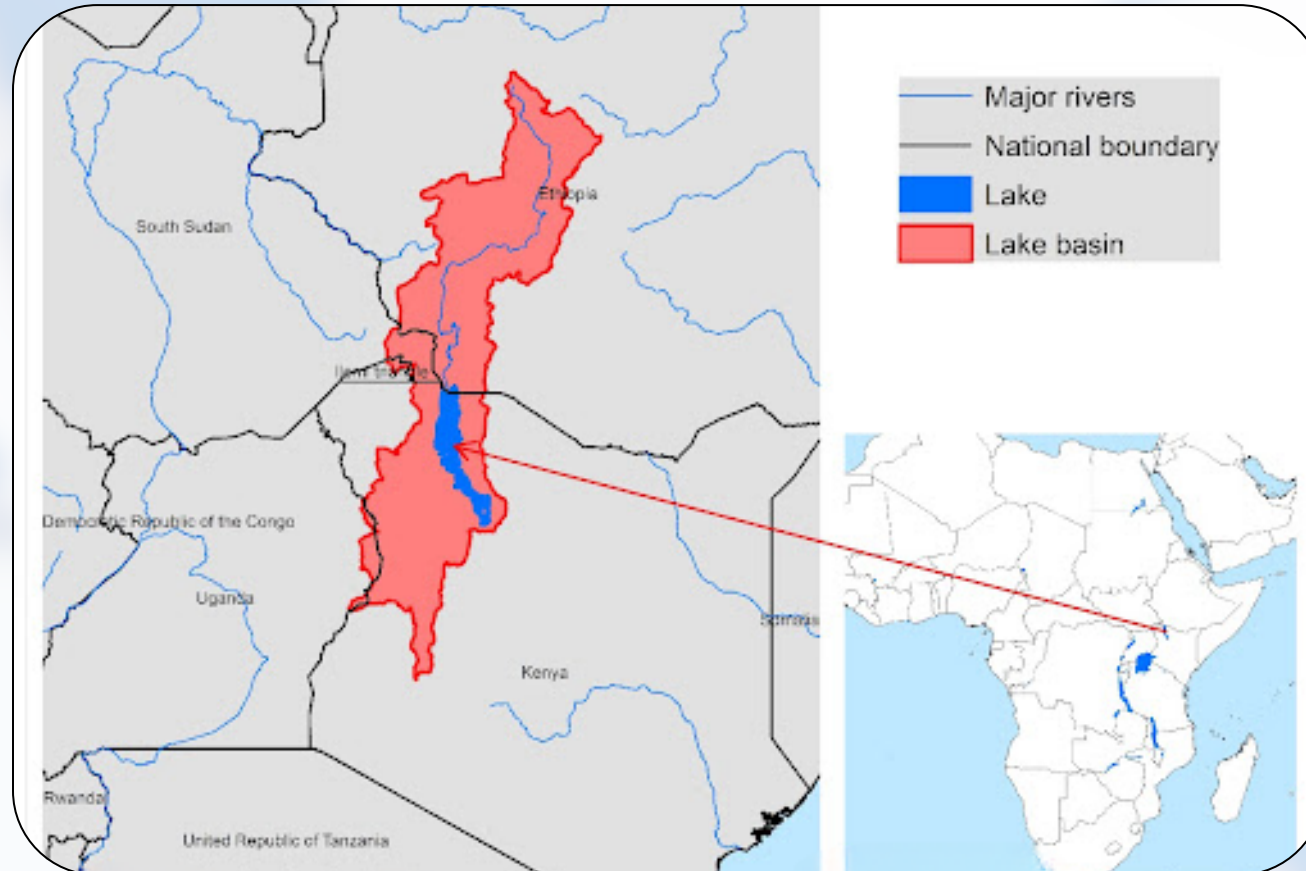
- Scientists extracted 18-20 million-year-old enamel proteins from extinct mammals in **Kenya's Turkana Basin**.



## Crucial Facts

- Location:** Kenya (NW), Ethiopia (S), parts of Uganda & South Sudan.
- Type:** Endorheic (closed) basin in the Gregory Rift system.
- Center:** Lake Turkana—a brackish, ecologically rich soda lake.

## Key Highlights



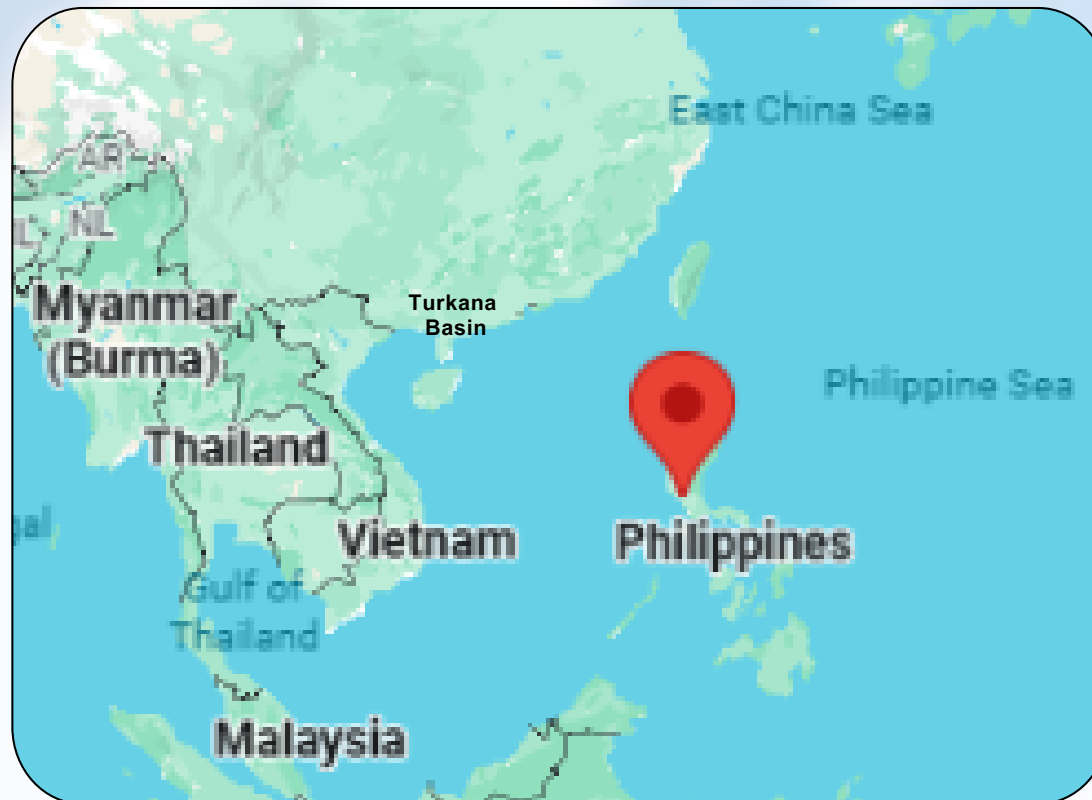
- Centred around **Lake Turkana**, the **world's largest desert lake**.
- An endorheic basin is a **closed drainage system** with **no outflow to seas or oceans**.
- It is known for its **rich fossil record**, **unique biodiversity**, and role in studying human and **mammalian evolution**.



# Pugad Island

## Why in News?

- Philippines **sinking island** community struggles against **rising sea levels to survive** and adapt.



## Crucial Facts

- **Located:** In Manila Bay, at mouth of the Angat-Pampanga River Delta.
- **Part of:** Hagonoy municipality, Bulacan Province, Philippines.
- **Type:** Triangle shaped atoll with a large lagoon and a coral reef ecosystem.

## Key Highlights



- According to the latest census, the island has a population of **1,636** residents.
- The island is experiencing **severe land subsidence**, sinking at 11 cm/year, the fastest in the Philippines.
- The Philippines' sea level is **rising 3× faster** than the global average, threatening coastal communities.



**Stay Tuned!**