

Map MENTOR



English

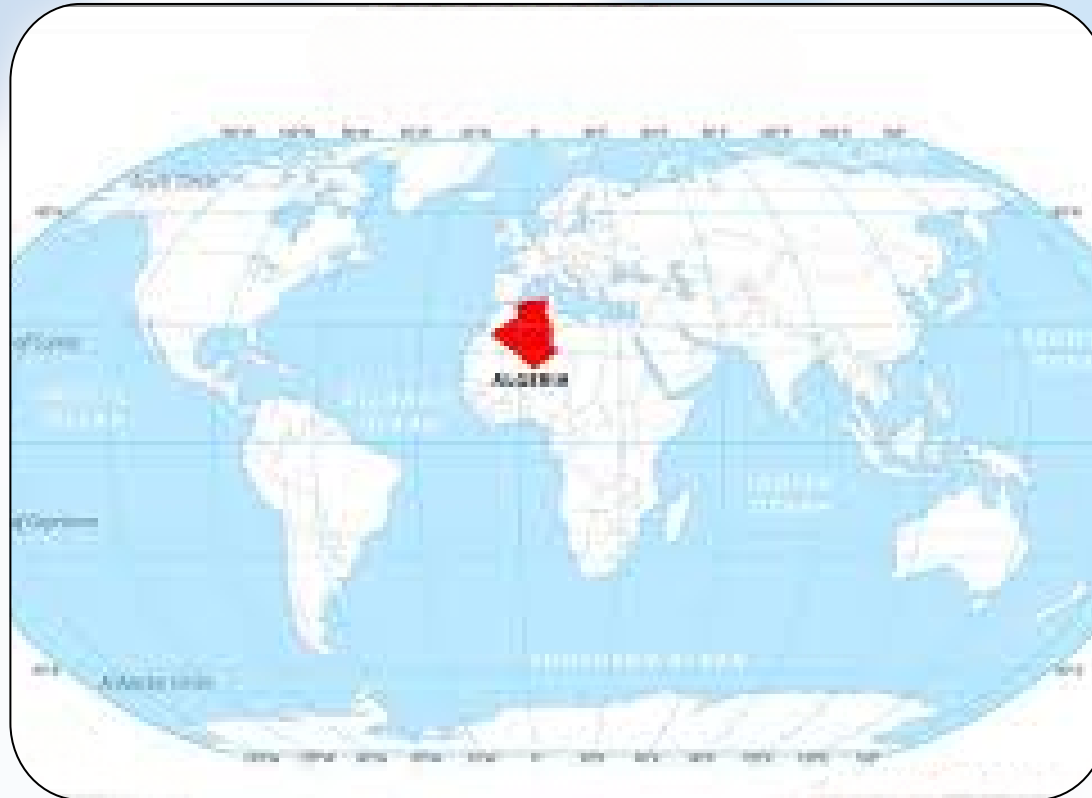
Weekly Compilation
[13th - 18th October, 2025]



Algeria

Why in News?

- **Algeria** boosts defence ties with India to **end dependence on Russia**.



Crucial Facts

- **Capital and largest city:** Algiers
- **Government:** Unitary semi-presidential republic
- **Region:** Maghreb, North Africa
- **Borders:** Tunisia (NE), Libya (E), Niger (SE), Mali, Mauritania, Western Sahara- (SW), Morocco (W), Mediterranean Sea (N).

Key Highlights

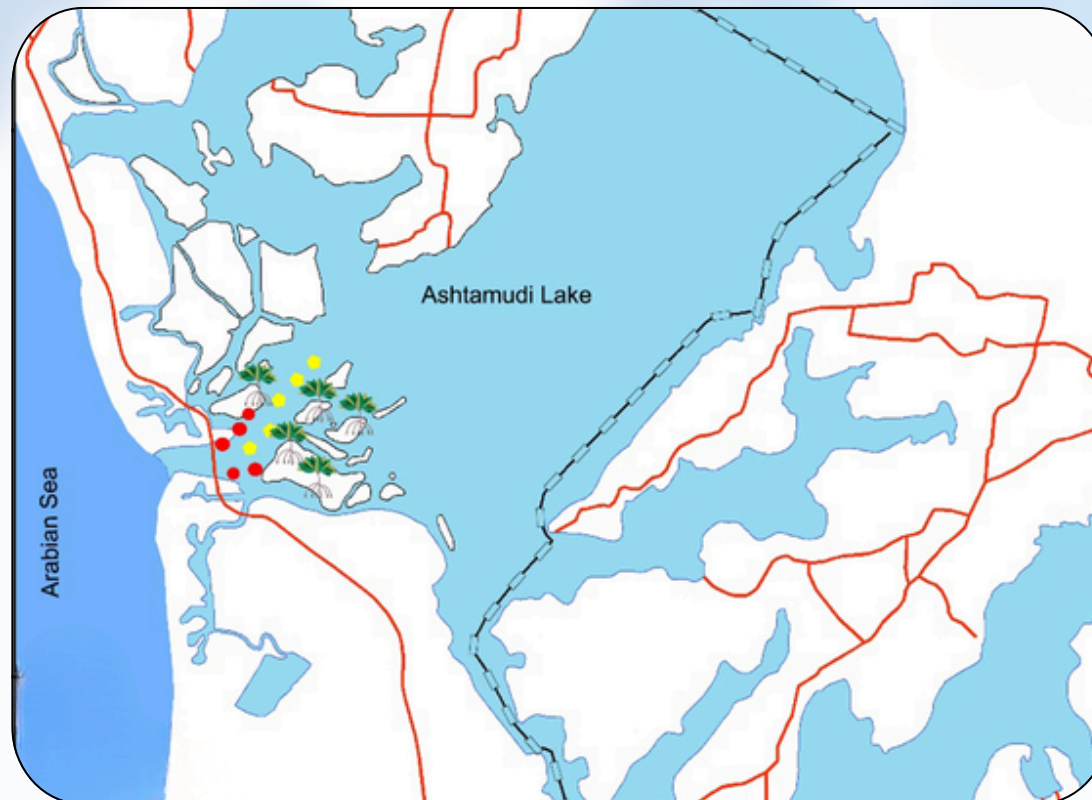


- **France** invaded **Algeria** in **1830** and formally annexed it in **1848**, though complete control was only achieved by 1903.
- The **Algerian War of Independence** began in 1954 and led to Algeria gaining independence in 1962.
- Algeria possesses the **16th largest petroleum reserves** and the **9th largest natural gas reserves** in the world.

Ashtamudi Lake

Why in News?

- Kerala HC directs State government and SWAK to constitute **Ashtamudi Wetland Management Unit**.



Crucial Facts

- **Location:** kollam District, Kerala
- **Primary inflows:** Kallada River
- **Known as:** Gateway to the backwaters of Kerala.
- **Islands:** Sambranikodi Island, Munroe Island, Chavara Thekkumbhagom etc.

Key Highlights



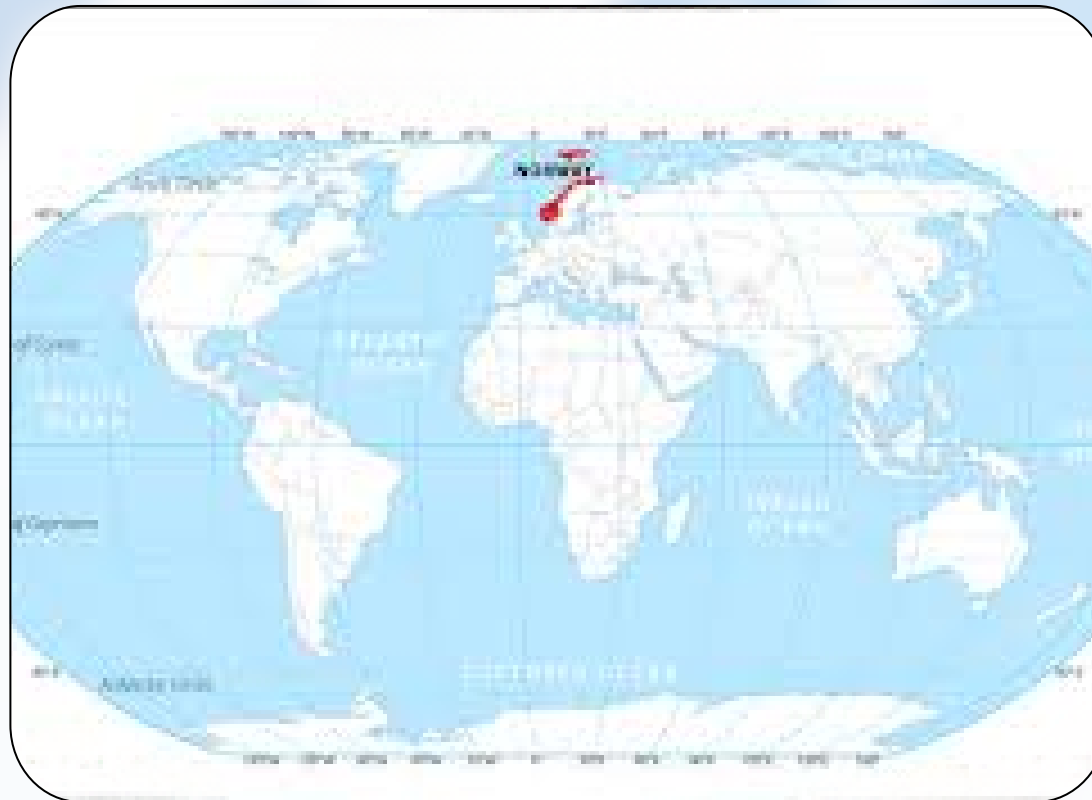
- The name "**Ashtamudi**" means 'eight peaks' in Malayalam, referring to its eight branches.
- It is the **second-largest estuarine ecosystem** in Kerala after Vembanad Lake.
- **Ashtamudi Wetland** is a **Ramsar site**, recognized internationally for its ecological value.
- In **2014**, Ashtamudi's **clam fishery** became **India's first Marine Stewardship Council (MSC) certified fishery**



Norway

Why in News?

- **Norway** braces for Trump's reaction if he does not win the **Nobel peace prize**.



Crucial Facts

- **Location:** Scandinavian Peninsula, Northern Europe
- **Capital and largest city:** Oslo
- **Government:** Unitary parliamentary constitutional monarchy
- **Borders:** Sweden (east), Finland & Russia (northeast)



Key Highlights



- Unified kingdom established in 872 from merger of **petty kingdoms**.
- Norway has the **world's largest sovereign wealth fund**, valued at US\$1.3 trillion.
- The **Nordic welfare model** ensures **healthcare** and comprehensive **social security coverage**.



Stay Tuned!